

SURVEY NOTES

Volume 16 Issue 09

September 2010

CALIFORNIA LAND SURVEYORS ASSOCIATION, SAN DIEGO CHAPTER

5519 Clairemont Mesa Blvd, Mail Box 261, San Diego, California 92117

www.sd-surveyors.org

Chapter Meeting

Wed. September 15

Guest Speaker

Mike Pallamary

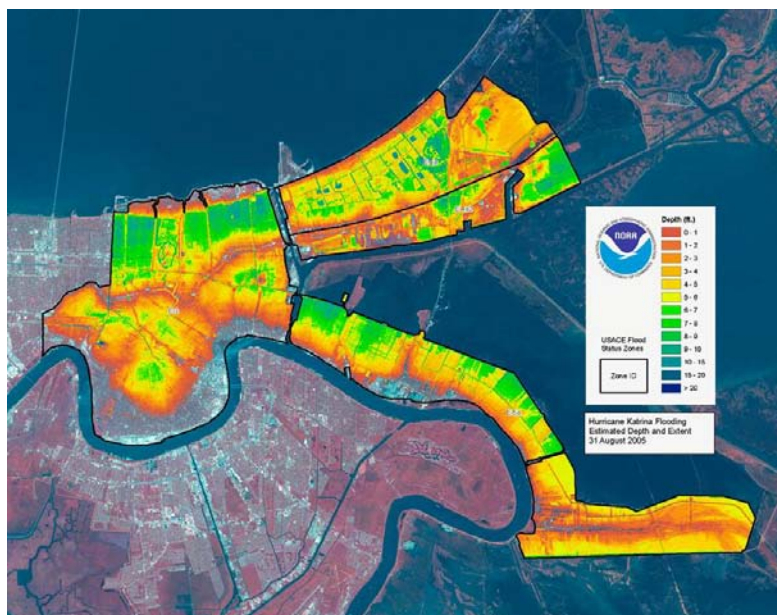
www.pallamaryandassociates.com

LOCAL DATUM ISSUES

DOES ANYONE KNOW WHERE SEA LEVEL IS?

Outdated benchmarks, rising sea levels and recent court rulings have all had an impact on riparian rights and coastal development. It is estimated that sea levels have risen 7 inches along the San Diego coastline over the last 100 years. It is projected that California sea levels will rise 16 inches by the year 2050 and 55 inches by the year 2100. The implications to coastal area such as Mission Beach, Coronado and downtown San Diego are staggering. In San Diego, the local benchmark system is woefully outdated and is based upon cryptic and vague documents. Outdated control is still being utilized and erroneous measurements are being made across the county. Mr. Pallamary will present his research into this important subject along with his work with NOAA on addressing these problems and inconsistencies.

- see attached reference files



Location

Best Western Seven Seas – Lord Jim Room

411 Hotel Circle South
San Diego, Ca. 92108
(619) 291-1300
Wed. September 15th
6 p.m. Social/Networking
6:30 p.m. Dinner
6:45 p.m. Program

Please RSVP through our CLSA San Diego Chapter website no later than
Thursday, September 9th

The website address is <http://www.sd-surveyors.org>.

Please click on the "Dinner Reservations" button and fill in all of your reservation information there.

If paying with a credit card, please remember to bring in a copy of your receipt for check in.

Those who do not make a reservation cannot be guaranteed a meal.

Dinner - \$26

LSIT or Surveying Student - \$15

Chicken California, Roast Tri Tip, Red Potatoes with parmesan, Vegetables, Hot Rolls & Butter, Mixed
Green Salad Ranch & Italian Dressings, Coffee, Tea or Decaf
Lemon Cake

August 2010 CLSA Board Meeting Minutes

August 18, 2010

Meeting held at Best Western Seven Seas, Mission Valley

Board and committee members present:

Casey Lynch, President
Justin Pallamary, Vice President
Blake Torgersen, Treasurer
Paul Goebel, Secretary
Karen Koklich
Sean Englert
Pat McMichael
Dave Viera
Dave Johnson
Anne Hoppe
Dave Ambler

Casey opened the meeting at 5:11pm

Presidents Report – Casey

- San Diego County Surveyor, Terry Connors is requesting input for revisions to the current survey manual. Casey will speak to Terry regarding the formation of an ad hoc committee to review the proposed manual proposed changes.
- Due to budgetary constraints, The County Surveyor will not be able to accept private record filings until further notice. The amount of storage space available is limited at this time.
- The County is in possession of N.P. Browne (LS 1162) field notes and records. There are about 8 or 10 boxes of records. Will CLSA be interested in taking them? We could look into the cost of scanning. MOTION to ask Terry to take custodianship of the N.P. Browne records and store them at Rick Engineering. PASSED.
- The Curt Brown (LS 2554) and Albert Daniels (LS 2201) private survey records are in the possession of David Evans and will be transferred and stored at Rick Engineering. Justin worked on similar projects before. The records are indexed right now. Casey will appoint an ad hoc committee including Sean, Justin, and Karen to define the costs of scanning and feasibility of our chapter taking of the task of organizing and creating a GIS database. There was Discussion about starting a scholarship for an intern to create a geodatabase for this.

- An ad hoc committee for tidal datums will be formed. Paul will act as the CLSA liaison along with the members and chair of the committee.

Vice President's Report – Justin

Future meetings:

- September: Vertical Datums by Mike Pallamary
- October: President elect with Orange County chapter. Discussion about inviting other OC members to speak. Meeting will be at Holliday Inn.
- November: Several ideas such as: Education topic, New Land Surveyors recognition night, US Fish and Wildlife Service speaker, Cal Trans staff recognition night.

Treasurer's Report – Blake

- General fund: \$5,337.38
- Education fund: \$7653.25

Secretary's Report – Paul

- Meeting minutes will be approved by email

Education Committee – Justin

- 18 people passed the LS exam in San Diego, about 14 people went to LSR. Congratulations given to the LSR Committee, Chairman Dave Johnson, and the Participants.

Ad Hoc Education Committee – Sean

- Committee will meet on August 31.

Annual Golf Tournament – Dave Johnson

- Hamburgers and brats for food, the golf course will grill them for us outside. Maybe 60 to 70 people will attend.

Legislative Committee – Annie

- AB 1919 Monument preservation fund. Would delete tract map exemption from user fee. 3rd reading 18 AUG
- AB 2038 Would permit a state governmental licensing entity, that issues professional or occupational licenses, certificates, registrations, or permits, to suspend, revoke, or refuse to issue a license where the applicant or licensee has failed to pay income taxes. DEAD
- SB 972 Affecting these contracts, that purport to indemnify, including the cost to defend, the public agency. This bill would further provide with respect to all contracts and amendments to contracts entered into by a public agency for design professional services, that all provisions, clauses, covenants, and agreements contained in, collateral to, or affecting these contracts or amendments to contracts that purport to require the duty defend to under an indemnity agreement are unenforceable. 3rd reading 18 AUG
- SB 1008 This bill would authorize registered limited liability partnerships and foreign limited liability partnerships to be formed by persons licensed to engage in the practice of engineering or land surveying 3rd reading 18 AUG

GIS Committee - Karen

- Karen and Jimmy were present on a panel discussion at ESRI Survey Summit conference.
- ACSM and ESRI conference will be together for the next 3 years at the conference.
- Newsletter has announced the survey monkey survey but we have no respondents yet.
- MOTION to put newsletter blast about Survey Monkey PASSED.

Membership – no report

Website Committee – Justin

- Padre Game pictures from the last meeting are on website.
- New recording fees are posted
- Some employment opportunities may be posted.
- Golf tournament will take payments online.

Bylaws –no report

JPPC – Sean

- Sept 9th next meeting.
- No new cases.

Nominating Committee – Pat

- Pat is having discussion with several people. We will have an answer soon.
- The candidate is usually announced at the August meeting, but we can announce a few days late.

Chapter Reps - Justin

- Our quarterly report was read at the state meeting. A report will be issued at the next chapter meeting.

New Business

- Casey watched the ACSM lobby day webinar. They will call upon various people to Lobby. Casey will temporarily be on the lobbying committee.

- Dave Johnson: Keep reminding people to come to chapter meetings. Discussion about dinner fees Ask about what topics people want to hear to get them to attend the meetings.

Old/Unfinished Business

None.

Motion to adjourn at 6:35.

August 2010 CLSA General Meeting Minutes

August 18, 2010

Meeting held at Best Western Seven Seas, Mission Valley

Casey Lynch opened the meeting at 6:45 pm and reviewed the executive meeting.

Justin Pallamary introduced evening speakers Drew Decker of USGS and Karen Koklich, GIS committee chairperson.

Drew gave a brief overview of his position at USGS as California Geospatial Liaison and gave a slide presentation. Following are some highlights from the presentation:

- The National Map is now a cornerstone of USGS and is a collaborative effort containing data from several agencies, and other organizations.
- Data distribution is easy and seamless at the website.
- Lidar is the source of a small percentage of the contours now (mostly in urban areas) but will steadily grow as a source of elevation data.
- USDA flies photos every 3 years and is a major source of image data.
- Many paper topo maps are no longer available.
- GeoPDF format is becoming more popular, and is the primary format for downloads from the National Map website.
- Store.USGS.gov has many forms of data available.

Education

(Classes and seminar information are for the educational benefit of our members and are not necessarily endorsed by CLSA or CLSA San Diego)

Pacific Land Seminars – 1 Day NCEES National PLS Practice Exam Seal Beach Sept 24. **2 Day Advanced Survey Topics** Seal Beach Sep. 25-26. **3 Day Advanced Survey Topics/PLS National and State Review Workshop** Seal Beach Sep 24-26.

3 Day F.L.S. (L.S.I.T.) Review Workshop Concord Oct 1-3, Orange Oct 8-10. LS and LSIT review seminars, advanced survey topics and various Surveying seminars such as **Land Description Fundamentals, Advanced Land Descriptions, Fundamentals Of The U.S.P.L.S.S., Advanced Problems In The U.S.P.L.S.S, Boundary Control, Boundary Law. Lot Line Adjustments / Lot Line Agreements, Legal Research, Water Boundaries, Easements And Reversions, Resolving Conflicts Of Evidence, The Surveyor In Court, A.L.T.A. Surveys, Subdivision Mapping, Entitlements, Condominium Plans, G.P.S. Surveys, Photogrammetry For The Surveyor, Basic Geodesy, State Plane Coordinate Systems, Error Theory & Measurement Analysis, Ethics And Standard Of care.** Excellent source for Surveying publications.

WWW.PACIFICLAND.COM tony@pacificland.com <http://www.pcpresinc.com> 562/431-1656

Subdivision Map Act Class – A One Day Seminar: see enclosed flyer
Rancho Cucamonga September 23 and San Diego October 28. www.landusenavigators.com

California Wetlands: New Issues and Regulations Affecting Land Use Planning teleconf Sept 23. **Current Issues in Compact Development** teleconf Sept 29. **Land Development Right Transfer Issues and Complexities** teleconf Oct 22. **Land Use Law Update** teleconf Oct 26. **California Water Law Update: Rights, Transfers and Supply Assessments** teleconf Oct 29. **Roadway Rights of Way: Understanding the Legal and Practical Issues** teleconf Nov 5. **Keys to Understanding Land Records** teleconf Nov 5. **Prevailing Wage Law** San Diego Nov 5. **Water Rights Sales and Transfers** Phoenix Nov 19. **Webinars: Introduction to California Subdivision Law. Current Issues in Development Impact Fees. A Primer on Land Surveys. A Primer on Right-of-Way. Conservation Easement Tax Incentives. Regulations Zoning Variances: Nonconforming Uses and Structures. Air Rights in Development: Current Trends and Legal Concerns. FEMA's Critical Flood Plain Regulation. Construction Contract Bid Errors. Construction Joint Ventures: Benefits and Pitfalls. Contractor's Dilemma of Dealing With Bad Plans and Specs. Pros and Cons of Cost-Plus vs. Fixed Price Contracts. The Construction Bidding Process. Understanding the Federal Construction Bidding Process. Understanding the Development Approval Process. Design Professionals' Exposure for Design Errors and Omissions. Liability Issues for Design Professionals. ALTA Policy, Endorsements and Transaction**

Strategies with Title Insurance. Curing Title Exceptions. Current Issues in Real Estate Title and Title Insurance. Infill Development Fundamentals. Discounts for multiple registrations. www.lorman.com (866) 352-9539.

AZ/CA Easements: Rights of Way and Other Encumbrances San Diego Sept 10, Phoenix Sept 9. **CA Deeds, Descriptions and the Law** featuring Walter Robillard Oct. 14 Burbank, Oct 15 Anaheim <http://www.pesilaw.com/search/search.asp>

New Leica Viva Work Flow Seminar Costa Mesa Sept 15. Contact Cori Vernam 800-938-0606
http://campaign.constantcontact.com/render?v=001nphfS6MPjGkN_V8aAQytm8ZU_idJcTBD_Vip-cvs1Vn27taQZ-wgqxc9HjFPrFiZV5RtczW-VmYGLerPV3yxQ0J8SEei_KLEJNvBWxshd14r1WCEmHkkNQVS-J5MnV2sWbWKoKqJAOZ8FSoBgCi-JMntcFeBh-RxCdpZ_dQpk4MWizuuTCcmxpmQruVT0dBcmZf7d55zs4QbkR-ZPuvy_eWmOghB5IJZwyjJssc_2AbImk7b9wGBfZ_ZP78IBzEcavijjO6OhUU84XoulkUXemoDKy_XRRxK

Trimble SurveySense webinars www.trimble.com/surveysense **Trimble Dimensions 2010 Conference** Las Vegas Nov 8-10
<http://trl.trimble.com/docushare/dsweb/Get/Document-502970/Dimensions%202010>

Autodesk webinars: Part 1: 3D Laser Scanning Technology Overview. Part 2: Road & Highway Corridor Study. Part 3: Improving Road & Highway Design Workflows. http://offers.autodesk.com/10/171025/email/may_fup.php

Water Infrastructure Design with AutoCAD Civil 3D Sept 9.

<http://usa.autodesk.com/adsk/servlet/oc/offer/form?id=15146299&siteID=123112&mktvar001=171025&mktvar002=171025&ch=EM&rc=AEMIV>

Free SMART VENT's FEMA's TB1-08 and Elevation Certificates with free listing upon completion on Professional Surveyor Magazine web-site. <http://us1.campaign-archive.com/?u=cdf7e9cc9a1a12b28f21f7ff4&id=5c032776df&e=d57379b7e3>

Basics In 3D Laser Scanning

http://www.faro.com/site/resources/details/752?utm_source=Professional+Surveyor+Magazine&utm_campaign=7ae5c60c1b-FARO_June_9_E_blast_final6_7_2010&utm_medium=email

Cuyamaca College - Cuyamaca College offers an Associate of Science in Surveying that includes courses in Plane Surveying and Advanced Surveying, using equipment used in the field today, Survey Drafting Technology, and Boundary Control and Legal Principles. Other requirements for the degree include Engineering Graphics, Trigonometry, Introductory Physics, and courses to fulfill general education. Instructors are all practicing and licensed professionals. For additional information please contact Dr. Cyrus Saghafi at cyrus.saghafi@gcccd.edu or 619-660-4243..

College of the Canyons - Associate in Science Degree and Certificate of Achievement: Land Surveying. Contact www.canyons.edu or 661-362-3300.

Geospatial Analysis and Technology – Seminars, courses and software training. www.UCRExtension.net/geo 951-827-4105.

CSU Fresno Geomatics Engineering Dept. Contact www.csufresno.edu/geomatics/ for program and on-line courses.

CSU Pomona Surveying Program http://www.csupomona.edu/%7Ece_surv/surveng/index.html

Santiago Canyon College Surveying and Mapping Program Associate degree and LSIT review certificate.

<http://www.scccollege.edu/Departments/CareerEd/Survey/Pages/SurveyDegreePrograms.aspx>

Rio Hondo College Surveying Mapping & Drawing Certificate of Achievement. GIS program. <http://www.riohondo.edu/>

GIS Certification – thru URISA <http://www.gisci.org/>

CLSA San Diego Survey Student Stipends

The Stipend program's goals are to: provide funding for local students taking college level survey related classes. They will receive \$100 for an A, \$75 for a B, \$50 for a C. It will be limited to one survey class per student per semester. The Class must have been completed within the last 6 months. Applicants must be current members of the San Diego Chapter of CLSA. Licensed Land Surveyors are ineligible. All applications are subject to approval by the executive board. Applicants need to mail in a copy of their grade (of a surveying class) to: CLSA San Diego, 5519 Clairemont Mesa Blvd. Mail Box 261, San Diego, California 92117.

California Land Surveyors Association CLSA Education Foundation

C.L.S.A.

526 South E Street
Santa Rosa, CA 95404

Telephone: (707)578-6016 FAX: (707)578-4406

The Scholarship application is available at <http://www.californiasurveyors.org/files/scholarsh.html>



The Subdivision Map Act:

A One-Day Seminar in Several California Locations

Allen Matkins
in association with
LandUseNavigators.com

COST: \$195
Group discounts available

TIME:
Registration:
8:30 am
Class:
9:00 am - 4:30 pm

INCLUDES:
Map Act Navigator
(a \$49.95 value)



WHAT IS COVERED?

This seminar provides guidelines for effective use of the Subdivision Map Act. The instructors will discuss the responsibilities and powers of local agencies under the Act, as well as particular issues regarding when the Act applies.

SEMINAR HIGHLIGHTS:

- Discussion of legislative and judicial changes in 2009.
- Relationship of Map Act to other planning, zoning and development laws, and to CEQA
- When the Map Act applies (and when not)
- What kind of Map (Tentative/Final or Parcel Map) to use
- Certificates of Compliance
- Lot Line Adjustments
- Exemptions and exceptions under the Map Act
- Life of Tentative Map
- Vested Rights (including Vesting Maps, Development Agreements and Common Law Vesting)
- Exactions/Dedications/Fees
- Creative mapping approaches

WHO SHOULD ATTEND?

This seminar is designed for planners, surveyors, engineers, developers, builders, attorneys, project managers, architects, planning commissioners, council and board members, property managers, public works and utilities directors, zoning board members, and all others involved with the land use process.

This course qualifies for 6 hours of California MCLE credit.

FACULTY



Michael P. Durkee



David H. Blackwell

Register for a seminar: phone: 415-273-0310 web: LandUseNavigators.com or, register and pay at the door

Upcoming 2010 Classes:

Rancho Cucamonga
September 23, 2010

Community Center
Lion's Park Building
9191 Baseline Road
Rancho Cucamonga, CA 91730

San Diego
October 28, 2010

San Diego Concourse
Copper Room
202 C. Street
San Diego, CA 92101

2011 Classes Announced!

Red Bluff - January 27, 2011
Sacramento - February 24, 2011
Petaluma - March 24, 2011
Walnut Creek - April 28, 2011
Stockton - May 26, 2011

Marina - June 23, 2011
Santa Maria - July 28, 2011
Fresno - September 22, 2011
Burbank - October 27, 2011
San Diego - November, 17, 2011

Check LandUseNavigators.com for more details

Announcements

Accept the Challenge

Andy Karydes and his *Team Climb On* ride again and are accepting pledges to not only support research for a cure tomorrow, but also to provide programs which address the needs of people living with MS today. Through a contribution to the MS Bike Tour, we are now getting closer to the hour when no one will have to hear the words, "You have MS." If you can make it to the finish line on October 17th, look for the orange Team Climb On! jerseys and stop by for a celebratory beverage. [Click here to visit my personal page.](#) If the text above does not appear as a clickable link, you can visit the web address:

http://main.nationalmssociety.org/site/TR/Bike/CASBikeEvents?px=5434262&pg=personal&fr_id=14192&s_tafld=150568

Surveyors Service Company (SERVCO) is changing its name to Leica Geosystems Solutions Center

The new Leica Geosystems Solutions Centers will be in the existing locations of Costa Mesa and Burlingame, Ca., Phoenix and Tucson Az., plus Albuquerque, NM. The Servco name has been part of the surveying and construction community for over 80 years providing their customers with superior products, service and technical support. This will not change. Each of these former Servco brick and mortar facilities will continue to stock a full range of products for all measurement applications plus service and support products.

What does this change mean for you?

- Deal with the same quality individuals for sales and support as in the past.
- Superior products and technical service with manufacture direct resources.
- Full repair capabilities on any major brand of measuring equipment
- A strong selection of every day field supplies for all your project needs.
- Access to a large national pool of rental instruments for short term projects.
- Scheduled local product training and seminars focused on helping you improve your profitability.
- All products at everyday competitive prices.

We know the past year or so has been difficult on most businesses and individuals. Your loyalty to our company during these difficult times is greatly appreciated. Hopefully better business conditions are on the way.

Again thank you for your business and we look forward to a bright future together, Leica Geosystems, Inc

New Certified Federal Surveyors

Jimmy Elmore PLS , CFedS and James B. Taylor PLS , CFedS are in the June 2010 class of new Certified Federal Surveyors.



California Spatial Reference Center

As many of you may know, there is a forum available on the CSRC website that is an excellent avenue for communicating with the CSRC. If you have any questions, concerns, or comments related to the CSRC or the California Real Time Network (CRTN), we encourage you to participate in this forum. **CSRC Forum:** <http://sopac.ucsd.edu/ubbcgi/ultimatebb.cgi>

For the RTK users that take advantage of the free CRTN data streams, if you run into any problems such as connectivity issues, please post a message on the CRTN forum indicating the problem. This is the quickest way for the CSRC to become aware of any issues and we will do our best to resolve them.

Please visit the CRTN website for the current list of real-time sites as well as information on how to access the real-time data. **California Real Time Network (CRTN) :** <http://sopac.ucsd.edu/projects/realtime/>

Thank you for your continued support of the CSRC and we will continue to provide a modern state-wide geodetic control network as well as maintain the legal spatial reference system for the state of California, as best as possible during these challenging times.

Sincerely, Art Andrew CSRC Executive Chairman

GIS News

ESRI Surveying and Engineering Summit 2010

CLSA sponsored a panel discussion that provided insight into how California land surveyors employ GIS :

For more information see page 15.

<http://www.esri.com/events/survey/pdfs/agenda.pdf>

Have you wondered what goes on at the ESRI conferences? The above link is the agenda for this 4 day event.

CLSA also produced a trifold for this event:

http://www.sd-surveyors.org/~gis/articles_and_information/docs/CLSA_GIS_Trifold.pdf

ACSM and ESRI to hold joint 2011 conference in San Diego

Esri and ACSM have formally announced that they will hold a joint conference in San Diego beginning in 2011. The organizations signed a three-year agreement that will build on the synergies of Esri's Survey and Engineering GIS Summit and substantially broaden the scope of the ACSM annual conference. Called The Survey Summit, the event will comprise technical sessions and informative presentations as well as a manufacturer expo. The goal is to bring together GIS users with individuals from the surveying and engineering community to foster education and collaboration and to cultivate new business opportunities for everyone involved.



NEW – CLSA AUCTION WEBSITE!

Support

- California Land Surveyors Association Education Foundation
- Surveying Education
- Help Generate Scholarships for Land Surveying Students

Donate

- Sell Your Items Through the CLSA Auction Site and 10% of Your Sale Will Be Donated to the Education Foundation

Bid

- Purchase Items Through the CLSA Auction Site to Help Generate Proceeds for the Education Foundation



Go to <http://iauction.surveypath.org/index.php>
or go to www.californiasurveyors.org and click on Education Foundation

"Hear Yee Hear Yee"

*Help support one of our country's oldest professions -- Land Surveying

1st Annual Initial Point

Walk-A-Thon & 5k Run

September 25, 2010

Yucaipa Regional Park

33900 Oak Glen Rd., Yucaipa, CA

Food, Friends and Fun

Walk A Thon: Noon till 2pm

5k Run: Noon till 1pm

Food & Drink 2pm till 5pm

Prizes to the participant with the **most sponsors**, the participant with the **highest earning sponsorships** AND 1st, 2nd, & 3rd place **winners** of 5k Run!!!

*Sponsored by the California Land Surveyors Association -
Riverside/San Bernardino

Contact Tim Smith, President Elect @ (951)551-6830 for Details

pls7910@gmail.com



1st Annual Initial Point Walk A-Thon & 5k Run

*Help support one of our country's oldest professions - Land Surveying

September 25, 2010 - Yucaipa Regional Park - 33900 Oak Glen Rd., Yucaipa

*Sponsored by the California Land Surveyors Association - Riverside/San Bernardino

Contact Tim Smith, President Elect @ (951)551-6830 for Details pls7910@gmail.com



Participant: _____ Phone: _____

<i>Sponsor Name</i>	<i>Address</i>	<i>Amount</i>
1. _____	_____	\$ _____
2. _____	_____	\$ _____
3. _____	_____	\$ _____
4. _____	_____	\$ _____
5. _____	_____	\$ _____
6. _____	_____	\$ _____
7. _____	_____	\$ _____
8. _____	_____	\$ _____
9. _____	_____	\$ _____
10. _____	_____	\$ _____

CLSA-NALS

Conference 2011

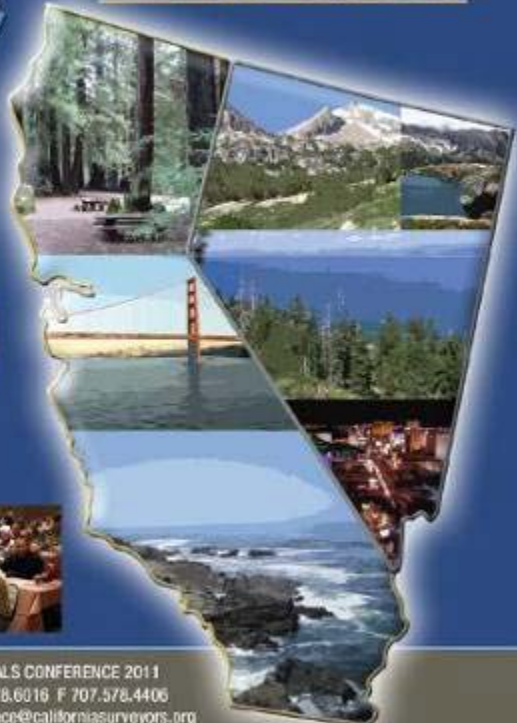
MARK YOUR CALENDAR



March 5-9, 2011
Bally's Las Vegas, Las Vegas NV

Featuring:

- Continuing Education
- Scholarship Auction
- Exhibits



Registration Information available soon
Please visit: www.californiasurveyors.org or www.nv-landsurveyors.org

CLSA-NALS CONFERENCE 2011
T 707.578.6018 F 707.578.4406
conference@californiasurveyors.org

FAMILY OWNED & OPERATED SINCE 2004

Mon-Fri 8 a.m. - 5 p.m.
Sat & Sun by appointment



5959 Mission Gorge Road Suite # 104
San Diego, CA 92120
Tel: 619-283-3137

Surveying & Construction Systems, Inc.

Your Local and In-House Surveying Instruments Service and Calibration Center



Sokkia, Topcon, Leica, Nikon, Spectra, CST, Pentax, South, David White and more..
GPS, Robotics, Total Stations, Theodolites, Auto Levels and Transits

In-House Service & Support

Short Turn-Around Time

Over 40 Years of hands-on experience

Certified Service and Calibration Specialists

We Support Most Major Brands

www.PrismSurvey.com

David Paul Johnson, PLS

Direct Sales Rep., Surveying
Cell 760 310 5054
E-Mail davidjohnson@leicaus.com

when it has to be right 

AERIAL PHOTOGRAPHY ♦ DIGITAL DATABASE MAPPING ♦ DIGITIZING SERVICES
DIGITAL ORTHOPHOTOS ♦ CONVENTIONAL TOPOGRAPHIC MAPPING
DIGITAL IMAGING



1161 EAST MAIN ST.
SUITE 102
EL CAJON, CA.
92021-7150

TEL: (619) 631-1366
FAX: (619) 631-1375
WEB: www.photogeodetic.com
EMAIL: maps@photogeodetic.com

ALLEN Instruments & Supplies

Dan McMahon
Product Consultant
760.271.4681 Mobile
714.238.3434 Office

800.215.2737 • Fax 714.238.3441
2940 E. La Palma Ave., Suite F
Anaheim, CA 92806
www.alleninstruments.com



Forrest (Jim) Youngs, P.L.S.
Regional Project Director
Geospatial & Mapping Services

TOWILL | Aerial Mapping

Towill, Inc. (Since 1955)
5933 Sea Lion Place, Suite 100
Carlsbad, CA. 92008-6624
706.438.5999
fax 760.438.7943
jim.youngs@towill.com
www.towill.com

ALTUS

Chuck Neely
Director Business Development

655 Deep Valley Drive, Suite 340
Rolling Hills Estates, CA 90274
310.541.8139 office
925.667.6661 cell
310.541.8257 fax
chuck.neely@altus-ps.com

ShanCad
AutoCAD Mapping Services



Tom Morrison
3230 Buena Hills Drive
Oceanside, CA 92056

760-216-7279
shancad@cox.net
www.shancad.com

REESE
Water & Land
SURVEYING SERVICES

ROBERT J. REESE
Owner • PLS 6208
robert@reesesurveying.com

1970 Partridge Drive
San Luis Obispo, CA 93405
Tel/Fax: 805-543-5375

CLSA San Diego Golf Scholarship Drive



Friday, October 8, 2010 1:00pm Shotgun Start
Meadow Lake Golf Course
Fee: \$69/per person (Awards banquet included)

Please mail checks to:
CLSA San Diego, 5519 Clairemont Mesa Blvd., Mail Box 261, San Diego, CA 92117

Player 1

Company

Phone (Cell)

Player 2

Company

Phone (Cell)

Player 1

Company

Phone (Cell)

Player 2

Company

Phone (Cell)

Newsletter

Members are encouraged to receive email newsletters. Request an email copy only: 48wake@cox.net

Notices, original articles and other relevant information are encouraged for publication in the newsletter. There are many interesting and pertinent articles in other publications. Mention of articles is encouraged, but please provide your remarks, summary in a Word doc format and a link to the article, rather than copying the whole article. PDF or JPEG format sized to approx 300 KB or less is best for graphics. Large reference files may have to be forwarded separately. Newsletter is distributed by the first Wed of the month. Send items to Allan Wake 48wake@cox.net by the last Saturday of the month.

Information in this newsletter is not necessarily endorsed by CLSA or CLSA San Diego.

*** New Lower Advertising Rates *** **Advertising policy approved by the Board:**

The **new lower rates** are: 1) full page one time in newsletter \$50.00. One year paid in advance \$450.00. 2.) ½ page one time in newsletter \$35.00. One year paid in advance \$325.00. 3) Business card size ad one year in newsletter \$50.00. 4) Employment offers by a member free for 1 month, extended if needed. Contact Newsletter Editor Allan K. Wake 48wake@cox.net for newsletter advertising. 5) Web-site banner \$100.00. Other Web-site advertising charges to be determined. For web-site advertising contact Web-site Coordinator Anne Hoppe, ahoppe@sandiego.gov

Thanks to the advertisers Lewis & Lewis, Prism, Allen Instruments, Photo Geodetic, Towill, Shancad, Servco, Altus, Reese Water & Land Surveying, Pacific Land Seminars, Land Use Navigators for supporting our Chapter !



CALIFORNIA LAND SURVEYORS ASSOCIATION SAN DIEGO CHAPTER

5519 Clairemont Mesa Blvd, Mail Box 261, San Diego, California 92117

2010 Officers

Casey Lynch, P.L.S.

President (619-871-4504)

Justin Pallamary, P.L.S.

Vice President (858-717-6112)

Blake Torgersen, P.L.S.

Treasurer (858-259-8212 x114)

Paul Goebel

Secretary (760-722-3495)

Pat McMichael, P.L.S.

Immediate Past President (619-291-0707)

Sean C. Englert, P.L.S.

Representative (760-230-6025)

Andy Karydes, P.L.S.

Representative (760-753-5525)

Don Woolley, P.L.S.

Representative (619-291-0707)

Anne Hoppe, P.L.S.

Representative (619-446-5290)

Gary Hus, P.L.S.

Representative (619-229-0301)

Dave Ambler, P.L.S.

Representative (619-296-1010)

Lonie Cyr, P.L.S.

Alternate Representative (858-614-5000)

Jack F. Roth II, P.L.S.

Alternate Representative (858-576-9200)

David P. Viera, P.L.S.

Alternate Representative (858-384-0088 x615)